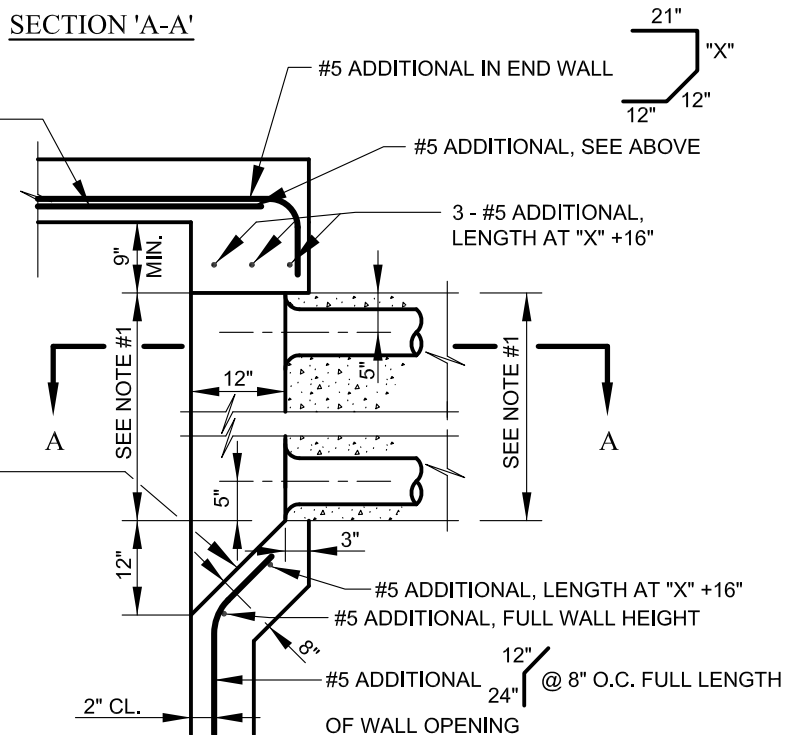


**SECTION 'A-A'**

SEE STD. BC 825.01 AND BC 825.02-1, INCREASE BAR LENGTHS BY 1'-0" AT ROOF SLAB EXTENSION

INSTALL BELL END ADAPTERS, TYPICAL  
45° CHAMFERED OPENING INSIDE OF M.H., TYP., TOP, SIDES AND BOTTOM WHERE SHOWN ON M.H. DETAILS



**ELEVATION**

**CAST-IN-PLACE RECESSED WALL EXTENSION**

**NOTE:**

- EXISTING AND/OR PROPOSED DUCT BANK, SEE PLANS, PROFILES, MANHOLE DETAILS, AND CONTRACT SPECIAL PROVISIONS FOR ADDITIONAL DATA.
- PLAN AND ELEVATION VIEWS SHOW CONDITION WHERE DUCTS ENTER M.H. ADJACENT TO SHORT WALL AND ADJACENT TO UNDERSIDE OF ROOF SLAB. WHERE ENTRANCES DIFFER, CONSTRUCT ADDITIONAL CHAMFERED ENTRANCES AS SHOWN.
- REINF. BAR "X" DIMENSION IS LENGTH, OR HEIGHT, OF WALL OPENING TO ACCOMMODATE DUCT INSTALLATION, BARS INCORPORATING "X" DIMENSION SHALL BE FIELD MEASURED, BENT, AND CUT.



APPROVED:  
*Ronald J. Baker*  
CHIEF, CONDUIT DIVISION  
*Khalil Zane*  
DIRECTOR, DEPARTMENT OF TRANSPORTATION

CITY OF BALTIMORE  
DEPARTMENT OF TRANSPORTATION  
CONDUIT DIVISION  
**CAST-IN-PLACE RECESSED WALL EXTENSION**

|                           |              |         |
|---------------------------|--------------|---------|
| ISSUED                    | REVISED      | REVISED |
| 8 / 2010                  |              |         |
| STANDARD NO.<br>BC 826.09 |              |         |
| SCALE : NONE              | SHEET 1 OF 1 |         |