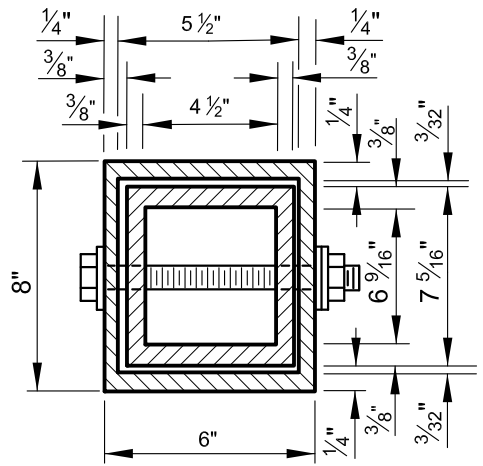
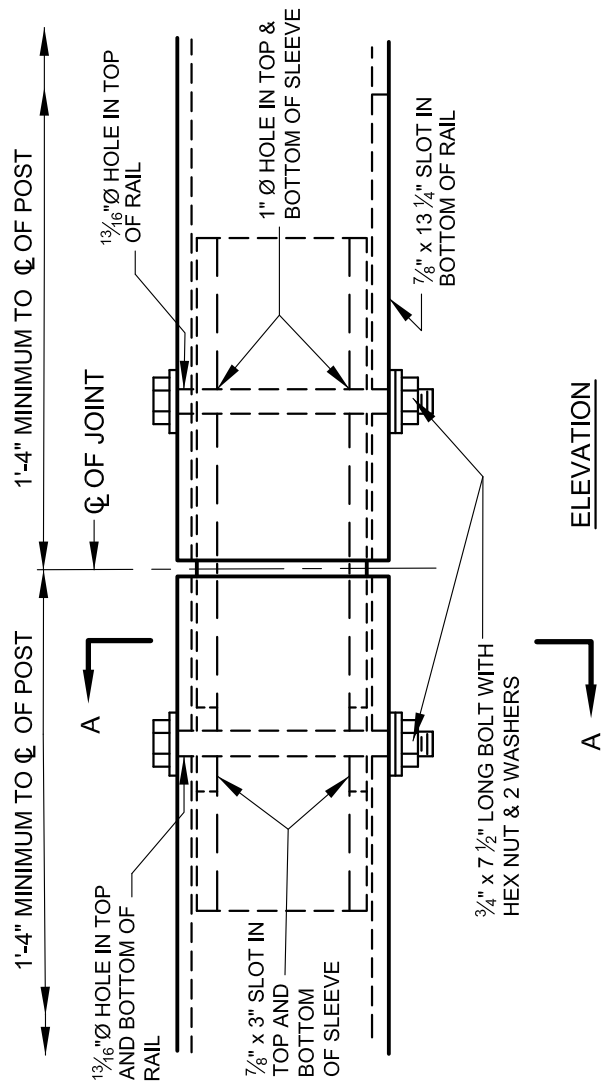
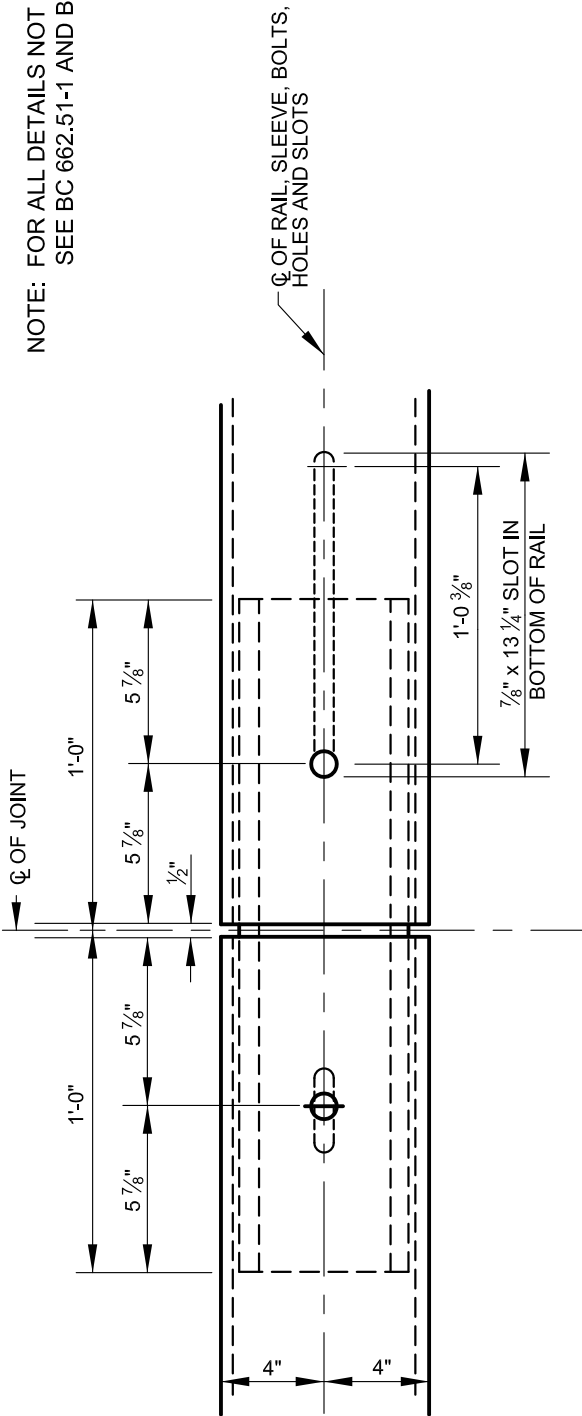


NOTE: FOR ALL DETAILS NOT SHOWN,
SEE BC 662.51-1 AND BC 662.61-1



APPROVED:
Frank Murphy
DEPUTY DIRECTOR - OPERATIONS
Khalil Zane
DIRECTOR, DEPARTMENT OF TRANSPORTATION

CITY OF BALTIMORE
DEPARTMENT OF TRANSPORTATION
TRAFFIC DIVISION
**TRAFFIC BARRIER BOX BEAM
MEDIAN BARRIER
SECTION 4 - SPLICE DETAIL**

ISSUED	REVISED	REVISED
8 / 2010		
STANDARD NO. BC 662.01-1		
SCALE: NONE	SHEET 1 OF 2	