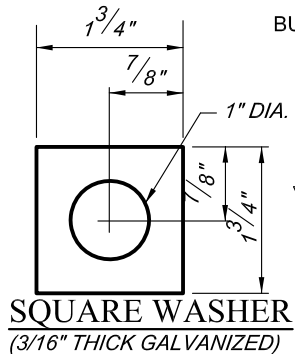
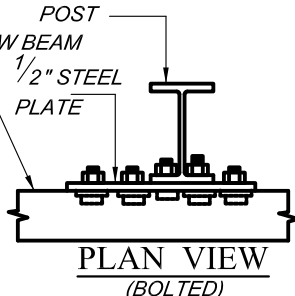


1/2" STEEL PLATE
(GALVANIZED)
WELDED OR BOLTED TO
POSTS ① AND ②
BURIED IN BACK SLOPE



SQUARE WASHER
(3/16" THICK GALVANIZED)

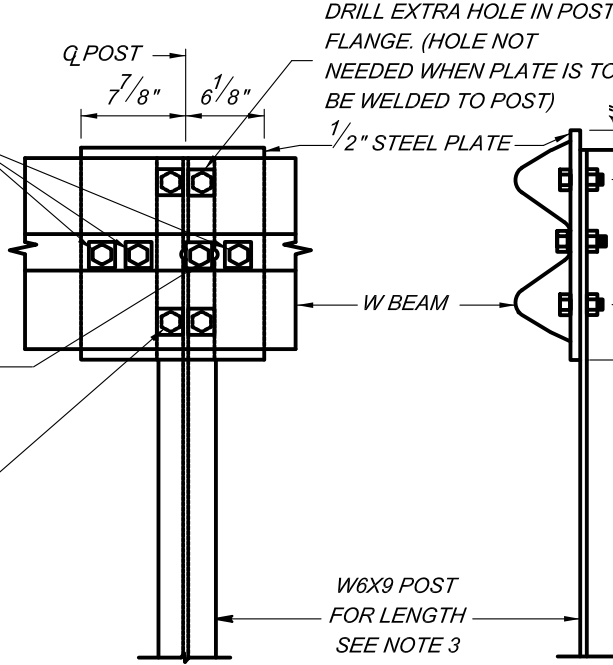


PLAN VIEW
(BOLTED)

THREE (3) 1" DIA. HOLES TO BE FIELD DRILLED IN W BEAM ELEMENT AND ATTACHED WITH 5/8" DIA. HEX. HEAD BOLTS 1 1/2" LONG EACH WITH ONE SQUARE WASHER AND HEX NUT

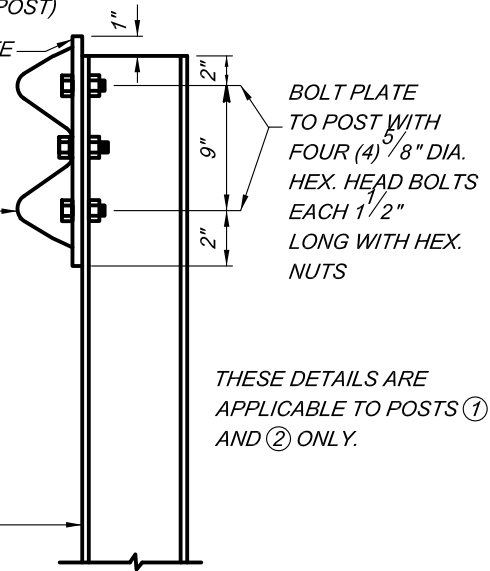
1" DIA. HOLE TO BE FIELD DRILLED THROUGH W BEAM AND THROUGH POST FLANGE. ATTACH W BEAM WITH 3/8" HEX. HEAD BOLT 2" LONG WITH ONE SQUARE WASHER AND HEX NUT

DRILL EXTRA 13/16" DIA. HOLE IN POST FLANGE. (HOLE NOT NEEDED WHEN PLATE IS TO BE WELDED TO POST)



FRONT VIEW

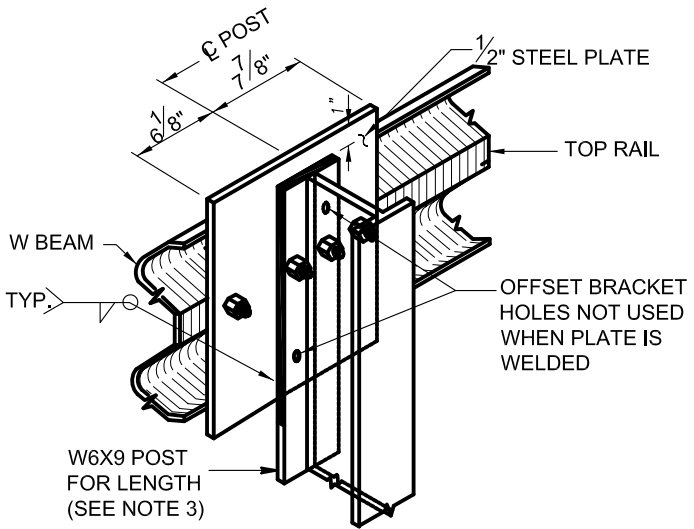
DRILL EXTRA HOLE IN POST FLANGE. (HOLE NOT NEEDED WHEN PLATE IS TO BE WELDED TO POST)



END VIEW

BOLT PLATE TO POST WITH FOUR (4) 5/8" DIA. HEX. HEAD BOLTS EACH 1 1/2" LONG WITH HEX. NUTS

THESE DETAILS ARE APPLICABLE TO POSTS ① AND ② ONLY.


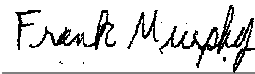
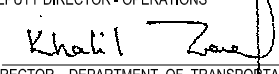


1/2" STEEL PLATE ATTACHED TO POSTS ① & ②

NOTES

1. THE 1/2" STEEL PLATE SHALL CONFORM TO THE REQUIREMENTS OF A-36. THE PLATE MAY BE WELDED OR BOLTED TO POSTS ① AND ② BURIED IN THE CUT SLOPE.
2. FIELD DRILLED HOLES AND WELDED AREAS SHALL BE COATED WITH ZINC RICH PAINT.
3. SINGLE OR DOUBLE RAIL POSTS ① AND ② LENGTH 4'-0". POST ③ LENGTH 8'-0" WHEN DOUBLE RAIL IS USED. FOR SINGLE RAIL POST ③ LENGTH IS 6'-0"
4. A STEEL PLATE SHALL BE USED ON POST ③ WHEN THE DOUBLE RAIL SYSTEM IS USED.

1/2" STEEL PLATE BOLTED TO POSTS ① & ②

	APPROVED:  DEPUTY DIRECTOR - OPERATIONS  DIRECTOR, DEPARTMENT OF TRANSPORTATION	CITY OF BALTIMORE DEPARTMENT OF TRANSPORTATION TRAFFIC DIVISION TRAFFIC BARRIER W BEAM WITH TYPE A END ANCHORAGE (OPTION 1)	ISSUED	REVISED	REVISED
	8 / 2010				STANDARD NO. BC 660.26