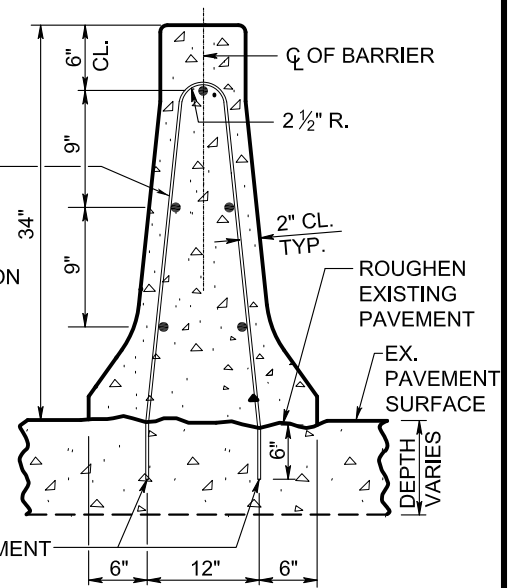


RIGID PAVING
(HALF SECTION)

REINFORCEMENT:
VERTICAL SHALL BE NO. 4 BARS BENT. THE 6" LENGTH AT ENDS BENT PLUMB TO ACHIEVE 12 1/2" SPACE AT 18" C/C.
HORIZONTAL SHALL BE CONTINUOUS NO. 5 BARS

ROUGHEN CONSTRUCTION JOINT
CONCRETE PAVEMENT SURFACE
FLEXIBLE PAVEMENT SURFACE

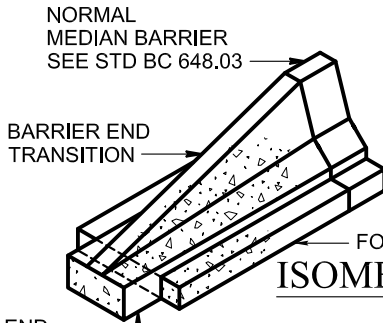
DRILL HOLES AND GROUT NO.4 BARS INTO EXISTING PAVEMENT



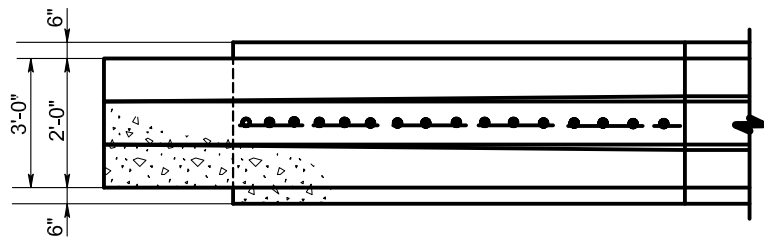
FLEXIBLE PAVING
(HALF SECTION)

EXISTING RIGID PAVEMENT
(BARRIER FOOTER IS REQUIRED FOR EXISTING FLEXIBLE PAVEMENT)

NEW CONSTRUCTION
(OR CONSTRUCTION ON EXISTING FLEXIBLE PAVEMENT)

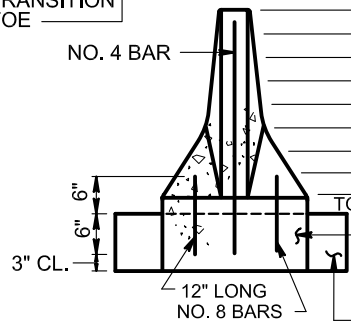


ISOMETRIC

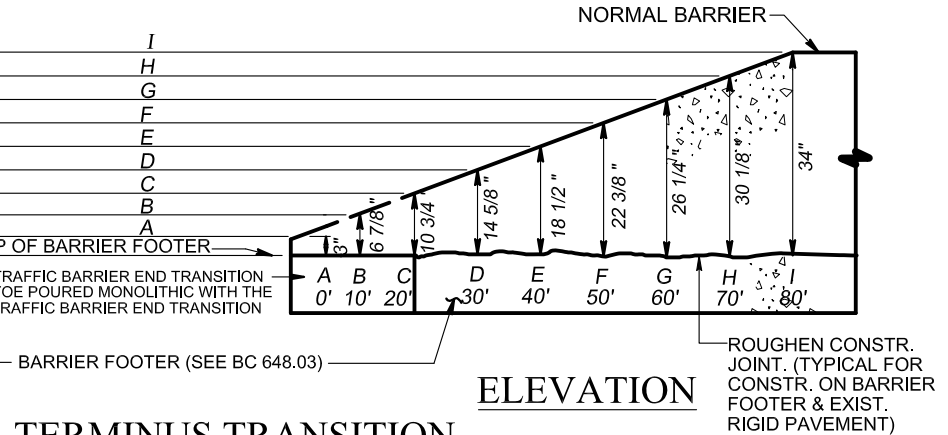


PLAN

END TRANSITION TOE



END VIEW



ELEVATION

NOTE: SEE STD. NO. BC 648.03 FOR OTHER DETAILS AND NOTES

TERMINUS TRANSITION



APPROVED:
Primal DeWitt
DIVISION CHIEF, TRANSPORTATION ENGINEERING AND CONSTRUCTION
Khalil Zae
DIRECTOR, DEPARTMENT OF TRANSPORTATION

CITY OF BALTIMORE
DEPARTMENT OF TRANSPORTATION
TRANSPORTATION ENGINEERING AND CONSTRUCTION

**34 INCH F SHAPE CONCRETE
MEDIAN TRAFFIC BARRIER
DOUBLE FACE**

ISSUED	REVISED	REVISED
8 / 2010		
STANDARD NO. BC 648.21		
SCALE: NONE	SHEET 1 OF 1	