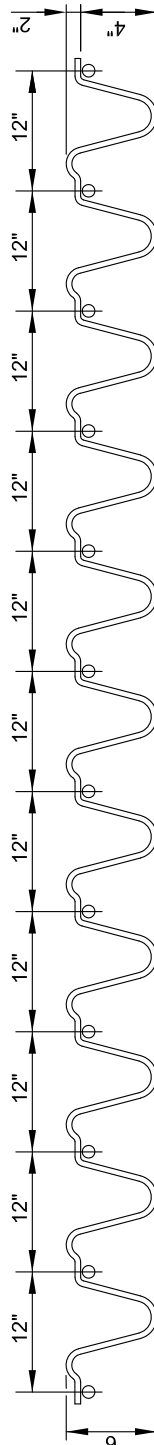
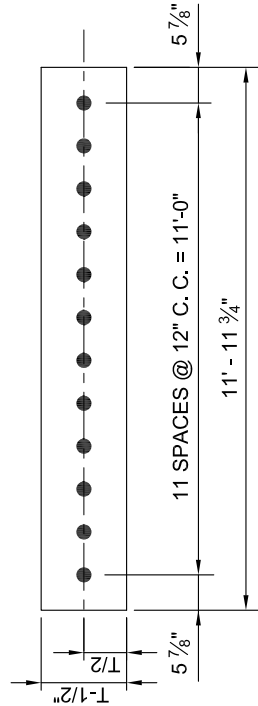


PLAN OF DOWEL UNIT FOR EXPANSION JOINT

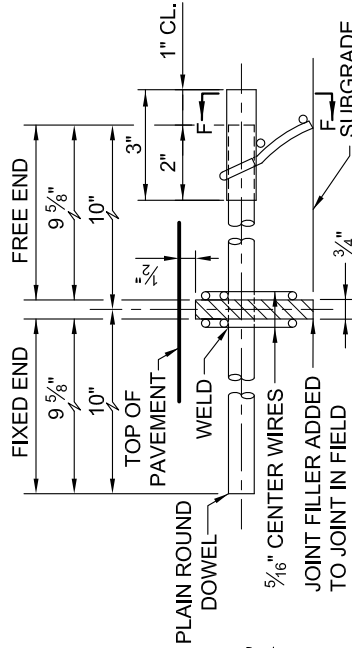


CENTER WIRE FOR EXPANSION JOINT

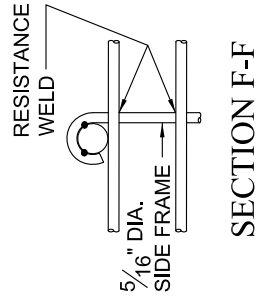


EXPANSION JOINT FILLER (3/4" THICK)

NOTES:
 STAKING PINS TO BE A MIN. OF 5/16" DIA. BARS. THE LONG END BEING 12" IN LENGTH AND POINTED, THE SHORT END WILL BE A MIN. OF 2" IN LENGTH. SEE BC 572.42 FOR DETAIL.
 THE DIAMETER OF ALL DOWELS SHALL BE AS SHOWN ON BC 572.21.



SECTION THRU EXPANSION JOINT



SECTION F-F



APPROVED:
Primal Dey
 DIVISION CHIEF, TRANSPORTATION ENGINEERING AND CONSTRUCTION
Khalil Zare
 DIRECTOR, DEPARTMENT OF TRANSPORTATION

CITY OF BALTIMORE
 DEPARTMENT OF TRANSPORTATION
 TRANSPORTATION ENGINEERING AND CONSTRUCTION

**DOWEL ASSEMBLY
 EXPANSION JOINTS**

ISSUED	REVISED	REVISED
8 / 2010		
STANDARD NO. BC 572.41		
SCALE: NONE	SHEET 1 OF 1	