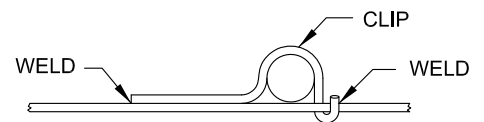
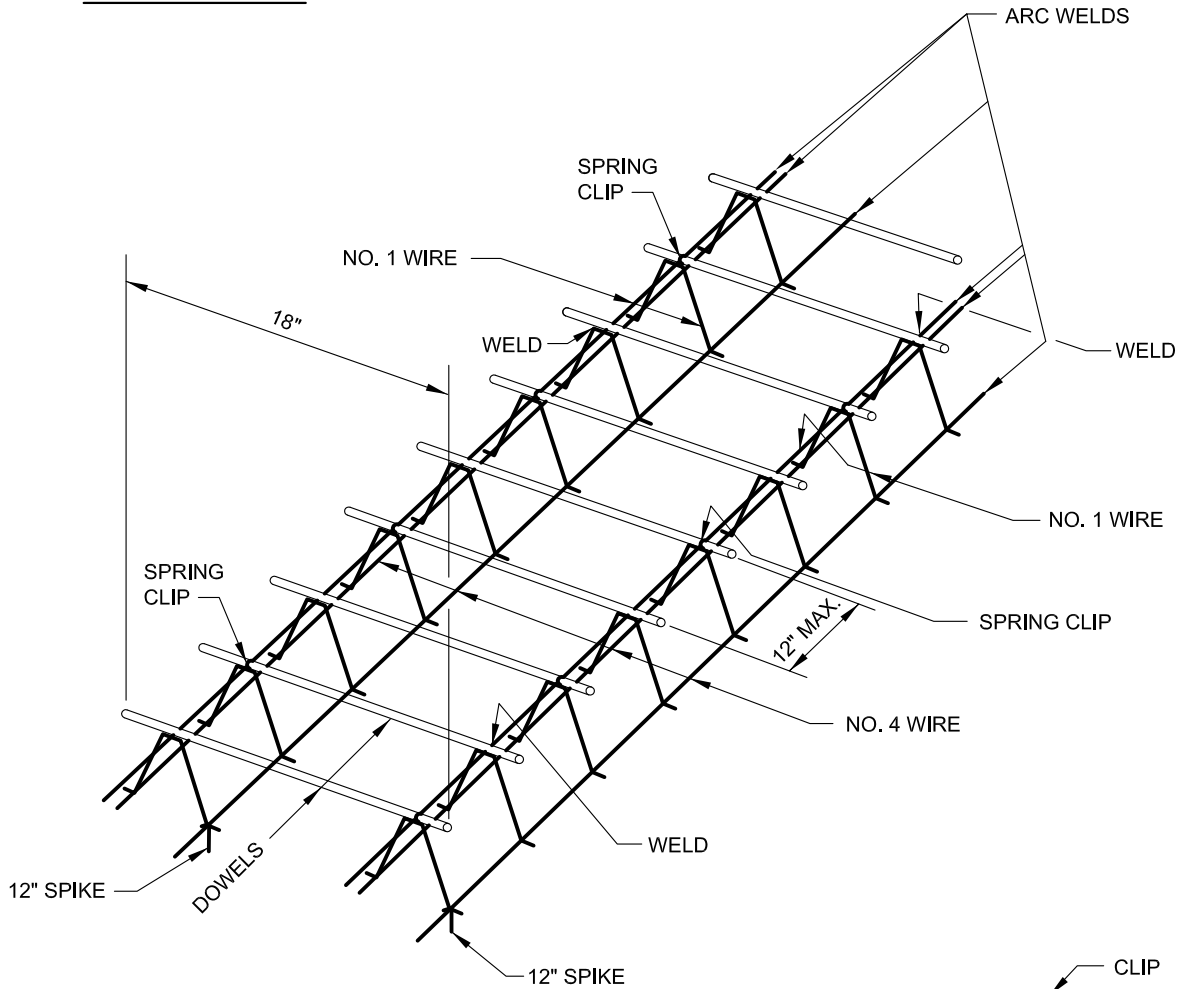


SPIKE DETAIL



SPRING - CLIP DETAIL

NOTES:  
SEE BC 572.21 FOR PAVEMENT THICKNESS  
AND THE REQUIRED DOWEL SIZES.

SPIKES TO BE PLACED 3 TO EACH SIDE,  
6 PER DEVICE.



APPROVED:  
*Primal Devita*  
DIVISION CHIEF, TRANSPORTATION ENGINEERING  
AND CONSTRUCTION  
*Khalil Zare*  
DIRECTOR, DEPARTMENT OF TRANSPORTATION

CITY OF BALTIMORE  
DEPARTMENT OF TRANSPORTATION  
TRANSPORTATION ENGINEERING AND  
CONSTRUCTION  
**DOWEL WELD  
LOAD TRANSFER ASSEMBLY  
CONTRACTION JOINTS**

ISSUED	REVISED	REVISED
8 / 2010		
STANDARD NO. BC 572.27		
SCALE : NONE	SHEET 1 OF 1	