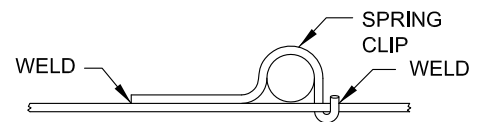
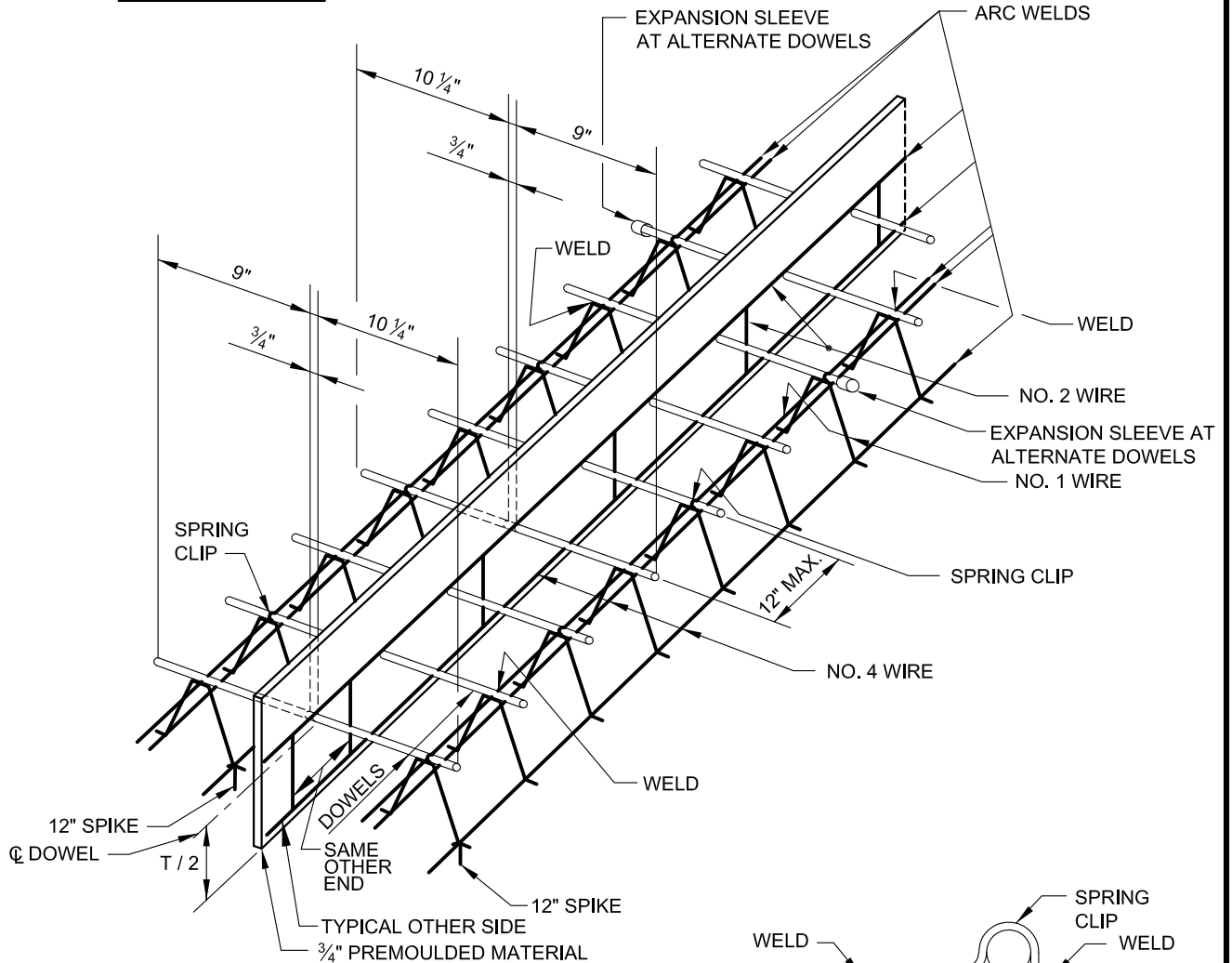


SPIKE DETAIL



SPRING - CLIP DETAIL

NOTES:
SEE BC 572.21 FOR PAVEMENT THICKNESS
AND THE REQUIRED DOWEL SIZES.

SPIKES TO BE PLACED 3 TO EACH SIDE,
6 PER DEVICE.

NOTE: LOAD TRANSFER ASSEMBLY EXPANSION JOINTS SHALL BE REQUIRED AT ALL P.C.'S ON THE
MAIN LINE OR AT 400' INTERVALS OR WHERE AND AS DIRECTED BY THE ENGINEER.



APPROVED:
Primal Devita
DIVISION CHIEF, TRANSPORTATION ENGINEERING
AND CONSTRUCTION
Khalil Zare
DIRECTOR, DEPARTMENT OF TRANSPORTATION

CITY OF BALTIMORE
DEPARTMENT OF TRANSPORTATION
TRANSPORTATION ENGINEERING AND
CONSTRUCTION

DOWEL WELD
LOAD TRANSFER ASSEMBLY
EXPANSION JOINTS

ISSUED	REVISED	REVISED
8 / 2010		
STANDARD NO. BC 572.26		
SCALE: NONE	SHEET 1 OF 1	