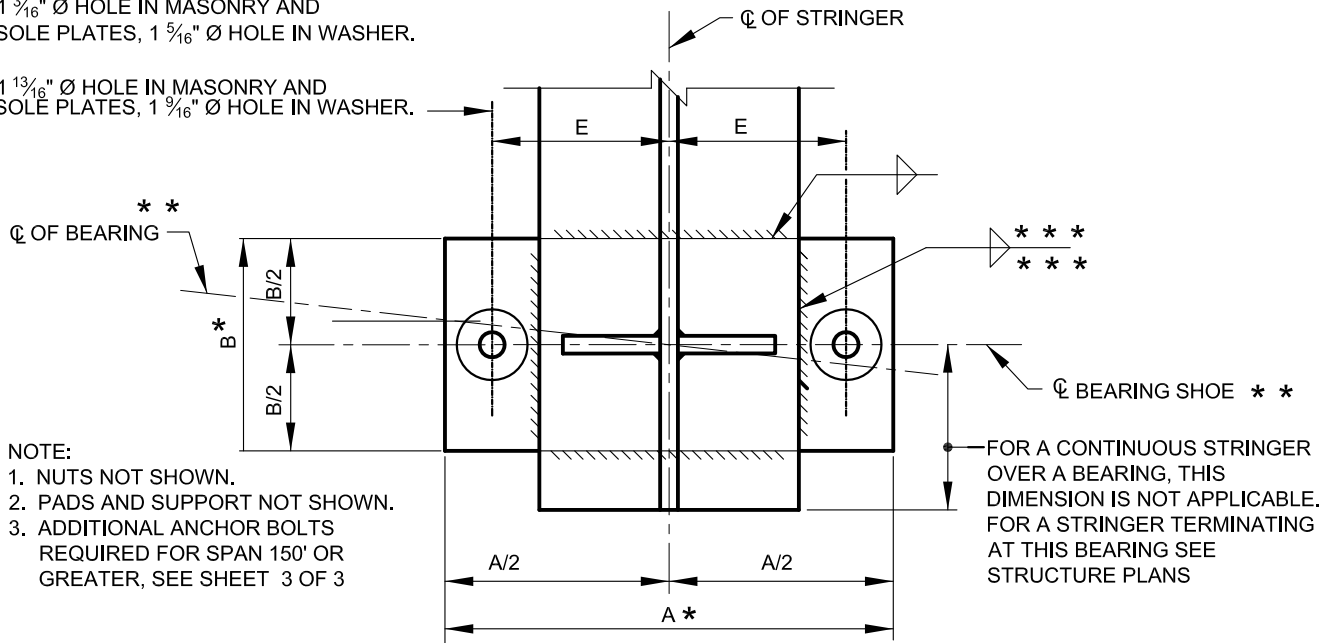


1 3/16" Ø HOLE IN MASONRY AND SOLE PLATES, 1 5/16" Ø HOLE IN WASHER.

1 13/16" Ø HOLE IN MASONRY AND SOLE PLATES, 1 9/16" Ø HOLE IN WASHER.

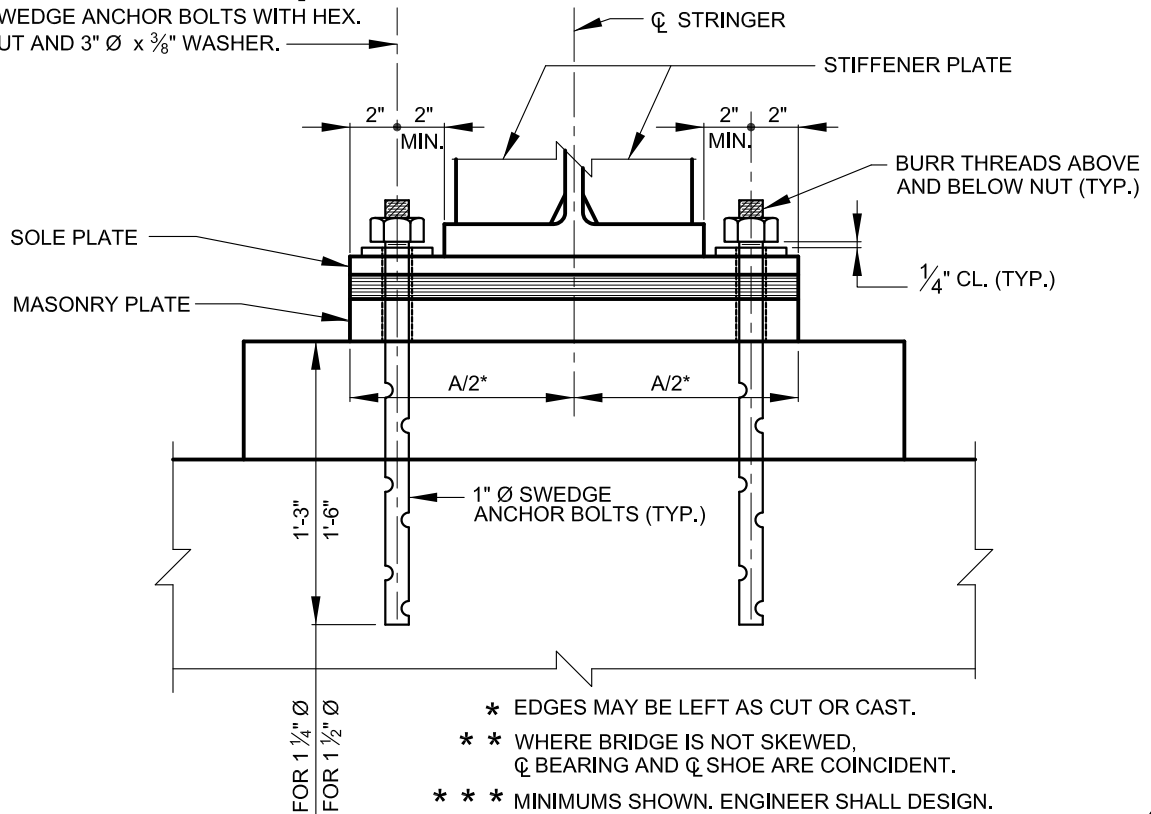


- NOTE:
1. NUTS NOT SHOWN.
 2. PADS AND SUPPORT NOT SHOWN.
 3. ADDITIONAL ANCHOR BOLTS REQUIRED FOR SPAN 150' OR GREATER, SEE SHEET 3 OF 3

FOR A CONTINUOUS STRINGER OVER A BEARING, THIS DIMENSION IS NOT APPLICABLE. FOR A STRINGER TERMINATING AT THIS BEARING SEE STRUCTURE PLANS

PLAN
SCALE: NONE

FOR SPANS UNDER 100' USE 1 1/4" Ø SWEDGE ANCHOR BOLTS WITH HEX. NUT AND 3" Ø x 3/8" WASHER.
FOR SPANS OVER 100' USE 1 1/2" Ø SWEDGE ANCHOR BOLTS WITH HEX. NUT AND 3" Ø x 3/8" WASHER.



- * EDGES MAY BE LEFT AS CUT OR CAST.
- ** WHERE BRIDGE IS NOT SKEWED, Q BEARING AND Q SHOE ARE COINCIDENT.
- *** MINIMUMS SHOWN. ENGINEER SHALL DESIGN.

ELEVATION
SCALE: NONE



APPROVED:
Primal Dev...
DIVISION CHIEF, TRANSPORTATION ENGINEERING AND CONSTRUCTION
Khalil Z...
DIRECTOR, DEPARTMENT OF TRANSPORTATION

CITY OF BALTIMORE
DEPARTMENT OF TRANSPORTATION
ENGINEERING AND CONSTRUCTION

**FIXED BEARING
MEDIUM LENGTH SPANS
(GRADE 50 STEEL)**

ISSUED	REVISED	REVISED
8 / 2010		
STANDARD NO. BC 462.01-1		
SCALE: NONE	SHEET 1 OF 3	