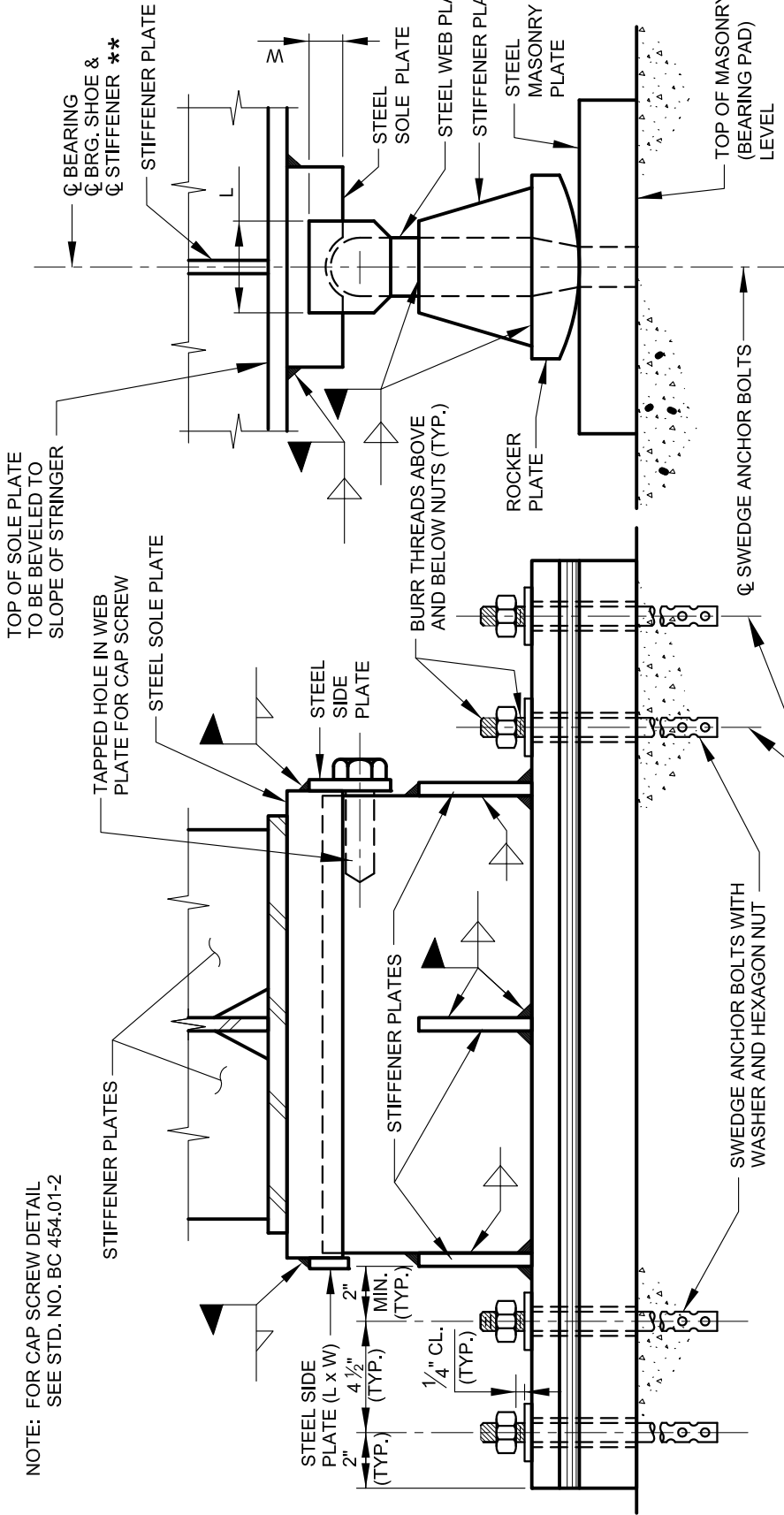


NOTE: FOR PLAN DETAIL SEE BC 453.01-1

NOTE: SIZE OF STRINGERS, PLATES, WELDS AND ANCHOR BOLTS DEPENDENT UPON SPECIFIC DESIGN

NOTE: FOR CAP SCREW DETAIL SEE STD. NO. BC 454.01-2



\*\* WHERE BRIDGE IS SKEWED,  $\phi$  BEARING AND  $\phi$  BEARING SHOE ARE NOT COINCIDENT.

END VIEW

SIDE VIEW

EXPANSION BEARING FOR STEEL BEAM SIMPLE AND CONTINUOUS SPAN OVER 150' C/C BEARINGS (ROCKER TYPE)



APPROVED: *Primal DeWalt*  
 DIVISION CHIEF, TRANSPORTATION ENGINEERING AND CONSTRUCTION  
*Khalil Zare*  
 DIRECTOR, DEPARTMENT OF TRANSPORTATION

CITY OF BALTIMORE  
 DEPARTMENT OF TRANSPORTATION ENGINEERING AND CONSTRUCTION  
**BEARING SHOE DETAILS  
 SPANS GREATER THAN 150'  
 C/C BEARINGS**

ISSUED	REVISED	REVISED
8 / 2010		
STANDARD NO. BC 453.01-2		
SCALE: NONE	SHEET 2 OF 2	