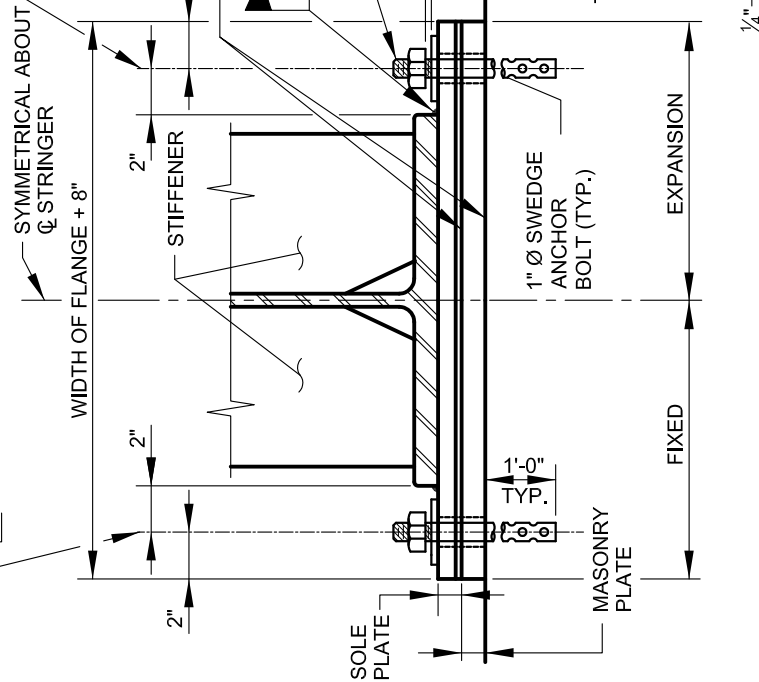


SLOTTED HOLE DETAIL

Ø OF 1 5/16" Ø HOLE IN SOLE PLATE AND ELASTOMER BRG. PAD FOR 1" Ø SWEDGE BOLT WITH HEX NUT AND 3" x 8" x 3/8" THICK WASHER



END VIEW

Ø OF 1" Ø SWEDGE BOLT WITH HEX NUTS AND 3" x 8" x 3/8" WASHERS, 1 5/16" x 5" SLOTTED HOLE IN SOLE PLATE AND 1 5/16" x 3" SLOTTED HOLE IN ELASTOMER BEARING PAD. FILL SLOTS AND HOLE AROUND BOLT WITH NON-HARDENING CAULKING COMPOUND OR ELASTIC JOINT SEALER.

SLOTTED HOLES IN EXPANSION SHOE ONLY

APPLY EPOXY RESIN ON FULL CONTACT AREA. USE EPOXY RESIN BONDING COMPOUND WHEN AIR TEMP. IS 70°F OR HIGHER. USE EPOXY RESIN PATCHING COMPOUND IF AIR TEMP. IS BETWEEN 30°F AND 70°F

SLOPE TOP OF SOLE PLATE TO FIT ALL GRADES OF BOTTOM FLANGE IN EXCESS OF 0.5% (1/16" PER FT.)

1" MIN. THICK ELASTOMER BEARING PAD

STEEL SOLE PLATE 1" MIN. THICK AT Q BEARING. PLANED OR HOT STRAIGHTENED

SIDE VIEW

ELASTOMER BEARING FOR STEEL BEAM SPANS LESS THAN 50' C/C BEARINGS



APPROVED: *Primal Devita*
 DIVISION CHIEF, TRANSPORTATION ENGINEERING AND CONSTRUCTION
Khalil Zae
 DIRECTOR, DEPARTMENT OF TRANSPORTATION

CITY OF BALTIMORE
 DEPARTMENT OF TRANSPORTATION
 TRANSPORTATION ENGINEERING AND CONSTRUCTION
**BEARING SHOE DETAILS
 SPANS LESS THAN 50'
 C/C BEARINGS**

ISSUED	REVISED	REVISED
8 / 2010		
STANDARD NO. BC 450.01-2		
SCALE: NONE	SHEET 2 OF 2	