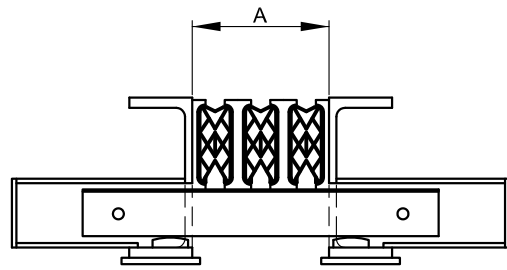
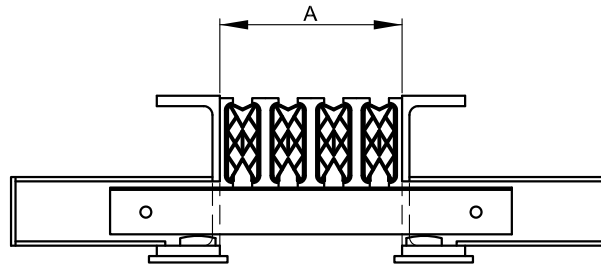


2 CELL



3 CELL



4 CELL

DIMENSION IN INCHES

TYPE	TOTAL ALLOWABLE MOVEMENT	JOINT "A" WIDTH		REQUIRED PRESET WIDTH 'A' OF EXPANSION JOINT @ :						
		MIN.	MAX.	30°	40°	50°	60°	70°	80°	90°
2 CELL	3.00"	4.125	7.125	5.925	5.725	5.525	5.325	5.125	4.925	4.725
3 CELL	4.50"	6.125	10.625	8.825	8.525	8.225	7.925	7.625	7.325	7.025
4 CELL	6.00"	8.125	14.125	11.725	11.325	10.925	10.525	10.125	9.725	9.325

THE ABOVE CHART IS BASED ON THE FOLLOWING:

1. THE MAXIMUM ALLOWABLE MOVEMENT FOR EACH SEALER IS 1 1/2"
2. THE SEALERS ARE FACTORY BONDED TO THE STEEL WITH BON-LASTIC ADHESIVE.
3. THE MOVEMENT DUE TO EXPANSION AND CONTRACTION IS BASED ON A TEMPERATURE RANGE FROM +120°F TO -30°F.
4. THE COEFFICIENT OF EXPANSION IS 6×10^{-6} °F.

NOTE:

IF MOVEMENTS, SUCH AS JOINT SHRINKAGE, CREEP DUE TO PRESTRESSING, PROGRESSIVE CLOSURE, PROGRESSIVE OPENING OF THE JOINT WIDTH IS TO BE ANTICIPATED, THEN THE ABOVE CHART SHOULD BE RECALCULATED WITH THE MIN. & MAX. WIDTH 'A' USED AS A GUIDE.



APPROVED:

Bismal DeWitt
 DIVISION CHIEF, TRANSPORTATION ENGINEERING
 AND CONSTRUCTION
Khalil Zare
 DIRECTOR, DEPARTMENT OF TRANSPORTATION

CITY OF BALTIMORE
 DEPARTMENT OF TRANSPORTATION
 TRANSPORTATION ENGINEERING AND
 CONSTRUCTION

**MULTI-CELL MODULAR
 COMPRESSION SEAL FOR
 ROADWAY JOINTS**

ISSUED	REVISED	REVISED
8 / 2010		
STANDARD NO. BC 446.01		
SCALE : NONE	SHEET 1 OF 1	