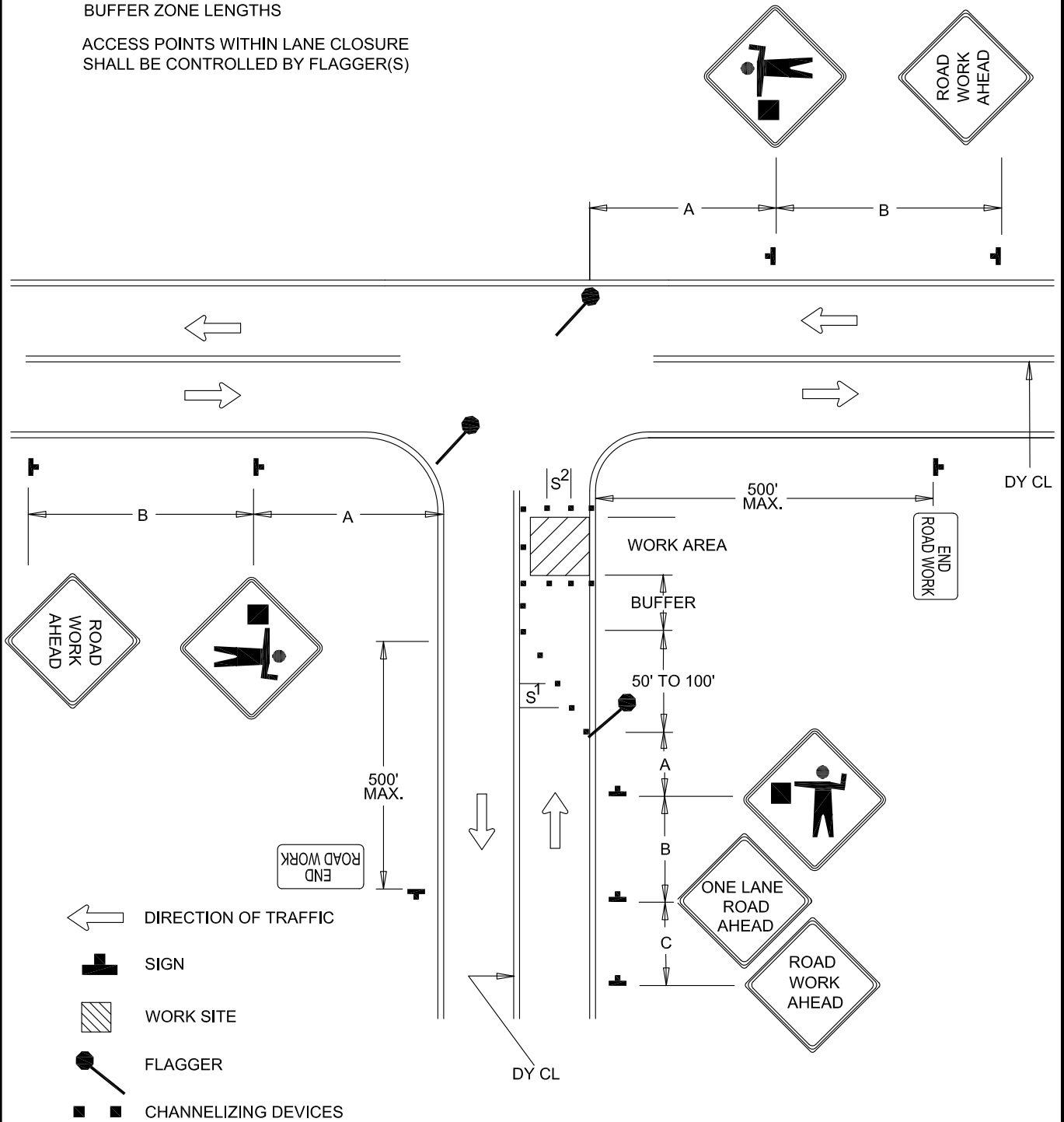


NOTES

REFER TO BC 104.01-4 FOR SIGN
SPACING, TAPER LENGTHS AND
BUFFER ZONE LENGTHS

ACCESS POINTS WITHIN LANE CLOSURE
SHALL BE CONTROLLED BY FLAGGER(S)



S¹=30 FT.

S²=10 FT.



APPROVED:

Frank Murphy
DEPUTY DIRECTOR - OPERATIONS
Khalil Zane
DIRECTOR, DEPARTMENT OF TRANSPORTATION

CITY OF BALTIMORE
DEPARTMENT OF TRANSPORTATION
TRAFFIC DIVISION

**FLAGGING CONTROL AT
3 - LEG INTERSECTION (3)**

ISSUED	REVISED	REVISED
8 / 2010		
STANDARD NO. BC 115.03		
SCALE : NONE	SHEET 1 OF 1	