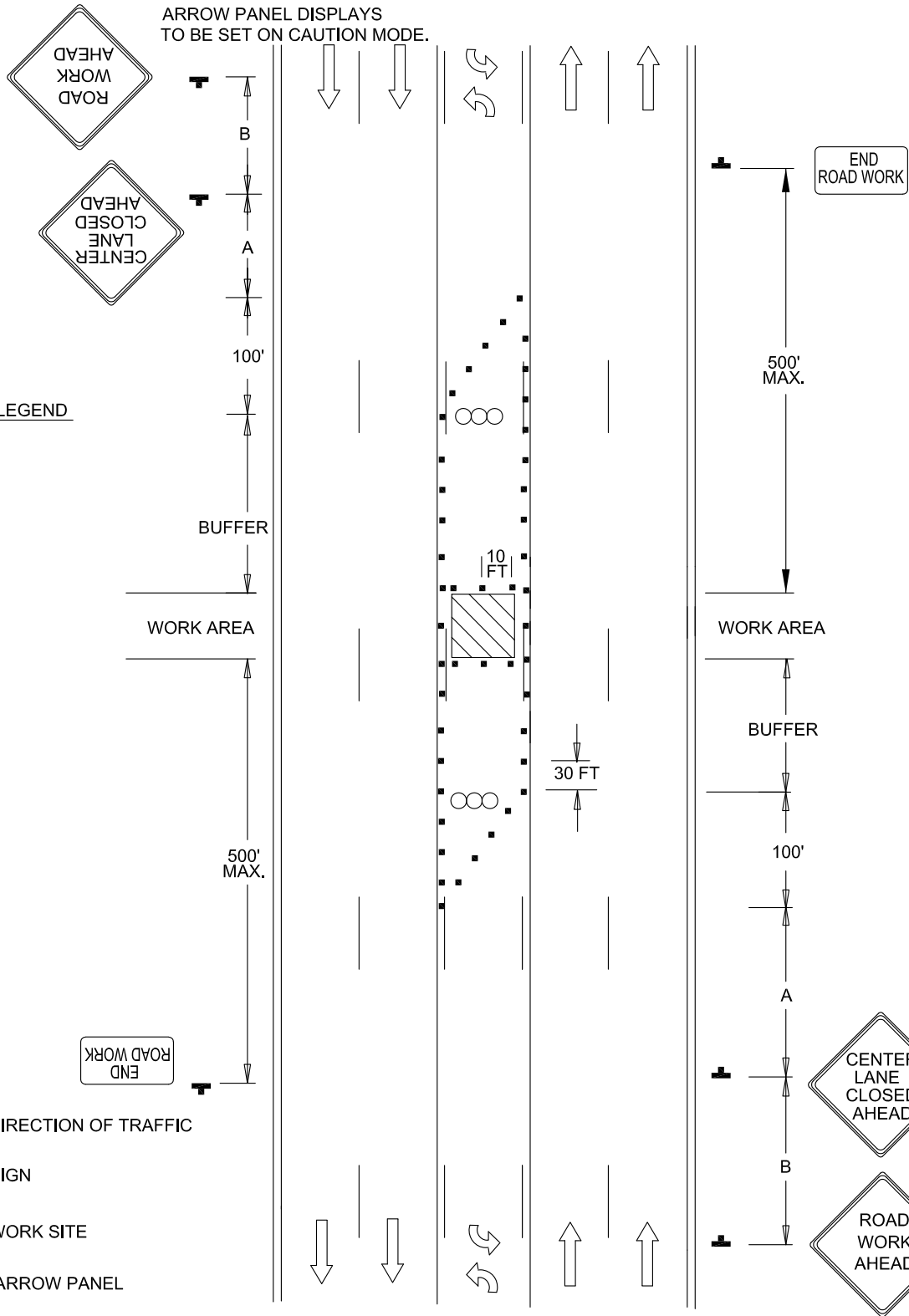


NOTES
 REFER TO BC 104.01-4 FOR SIGN
 SPACING, TAPER AND BUFFER LENGTHS

ACCESS POINTS WITHIN LANE CLOSURE
 SHALL BE CONTROLLED BY FLAGGER(S)

ARROW PANEL DISPLAYS
 TO BE SET ON CAUTION MODE.



LEGEND

LEGEND

- DIRECTION OF TRAFFIC
- SIGN
- WORK SITE
- ARROW PANEL
- CHANNELIZING DEVICES



APPROVED:
Frank Murphy
 DEPUTY DIRECTOR - OPERATIONS
Khalil Zane
 DIRECTOR, DEPARTMENT OF TRANSPORTATION

CITY OF BALTIMORE
DEPARTMENT OF TRANSPORTATION
TRAFFIC DIVISION

**TRAFFIC CONTROL FOR TWO-WAY
 LEFT TURN LANE CLOSURE**

ISSUED	REVISED	REVISED
8 / 2010		
STANDARD NO. BC 114.01		
SCALE : NONE	SHEET 1 OF 1	