

TEMPORARY TRAFFIC CONTROL TYPICAL APPLICATION

NOTES:

THIS TYPICAL ALSO APPLIES TO DIVIDED UNCONTROLLED HIGHWAYS

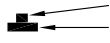
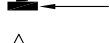

THE "BEGIN AND END SHOULDER USE" SIGNS SHOULD BE OMITTED WHEN THE SHOULDER CANNOT BE DIFFERENTIATED FROM THE NORMAL TRAVEL PATH.

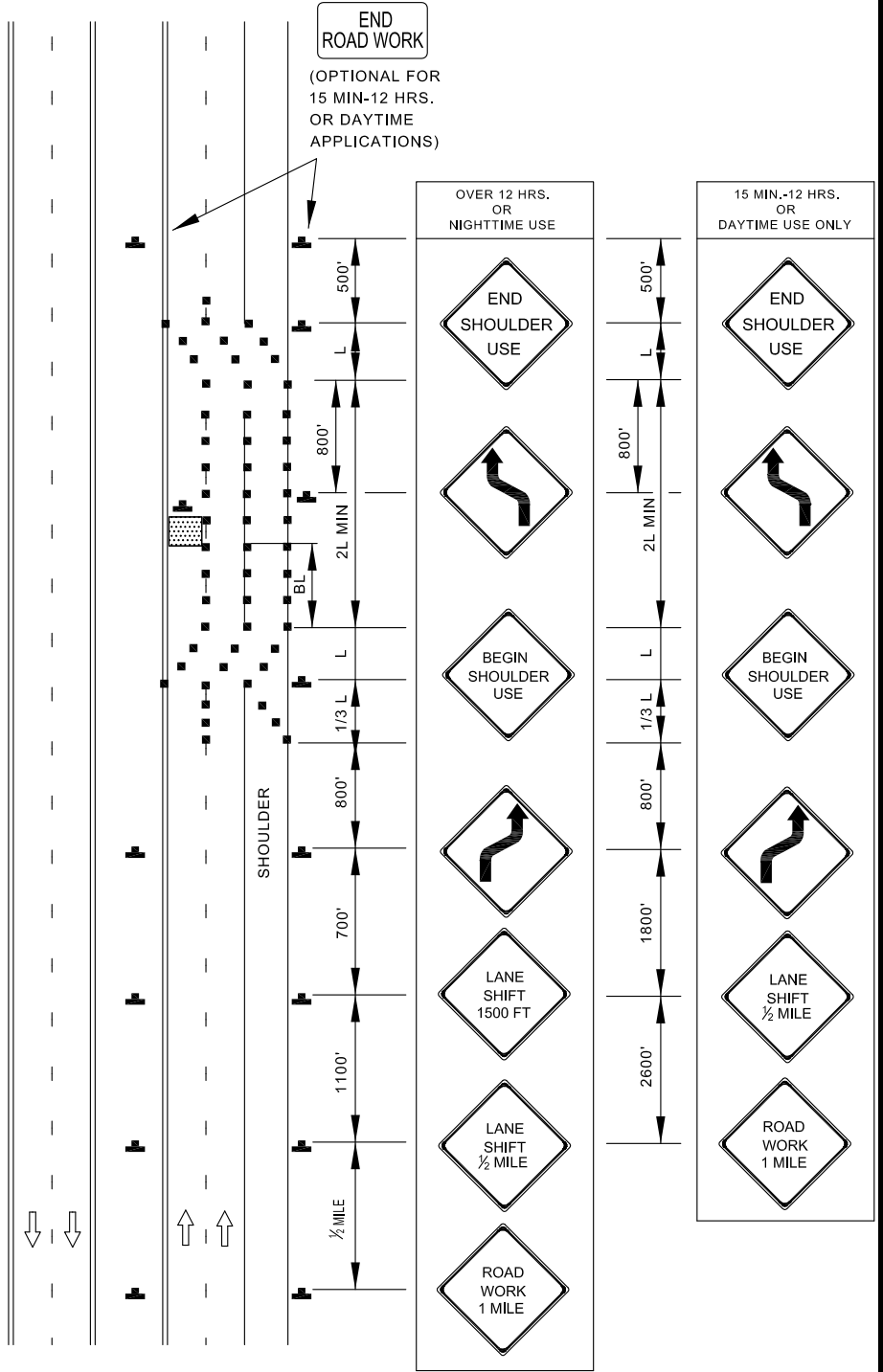
THIS TYPICAL SHALL BE USED FOR ANY LANE SHIFT WHERE PREVAILING SPEEDS CANNOT BE MAINTAINED THROUGH THE SHIFT.


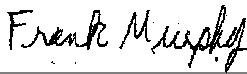
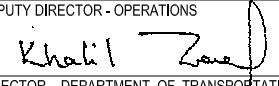
○ FOR LANE SHIFTS WHICH DO NOT SATISFY ABOVE CONDITIONS:

- ▶ DELETE "REVERSE CURVE" WARNING SIGNS, AND
- ▶ REPLACE "LANE SHIFT" SIGNS WITH "ROAD WORK XXX" SIGNS OR OTHER APPROPRIATE SIGNS AS SHOWN IN TEMPORARY TRAFFIC CONTROL TYPICAL APPLICATIONS.

KEY:

- ■ CHANNELIZING DEVICES
-  SIGN SUPPORT
 FACE OF SIGN
- ↑ DIRECTION OF TRAFFIC
-  WORK SITE



	APPROVED:  DEPUTY DIRECTOR - OPERATIONS	CITY OF BALTIMORE DEPARTMENT OF TRANSPORTATION TRAFFIC DIVISION	ISSUED	REVISED	REVISED	
	 DIRECTOR, DEPARTMENT OF TRANSPORTATION	ROADWAY SHIFT / EXP-FREEWAY / GREATER THAN 40 MPH	8 / 2010			STANDARD NO. BC 104.05-3
			SCALE : NONE	SHEET 1 OF 1		