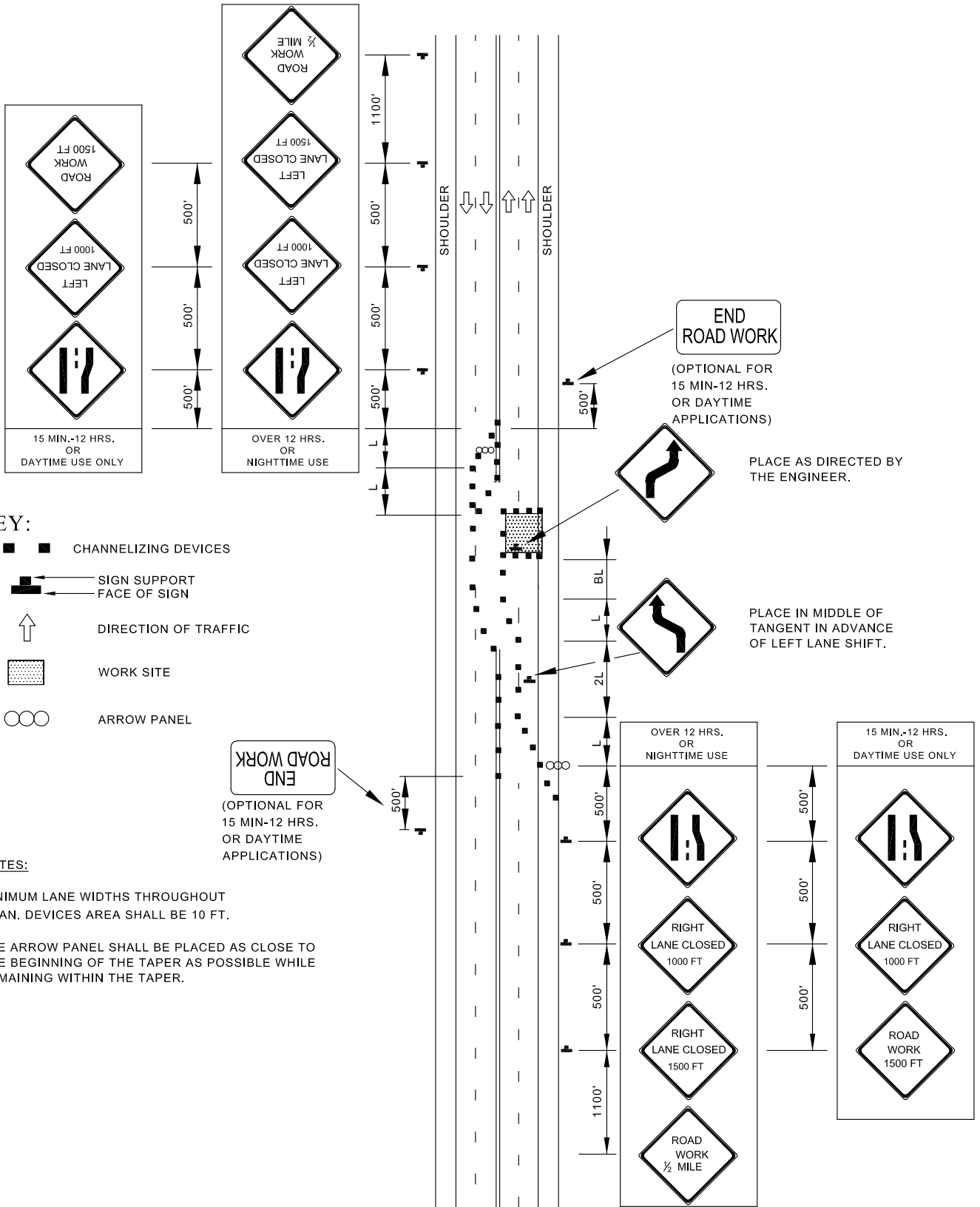


# TEMPORARY TRAFFIC CONTROL TYPICAL APPLICATION



**KEY:**

- ■ CHANNELIZING DEVICES
- SIGN SUPPORT FACE OF SIGN
- ↑ DIRECTION OF TRAFFIC
- ▨ WORK SITE
- ARROW PANEL

**NOTES:**

MINIMUM LANE WIDTHS THROUGHOUT CHAN. DEVICES AREA SHALL BE 10 FT.

THE ARROW PANEL SHALL BE PLACED AS CLOSE TO THE BEGINNING OF THE TAPER AS POSSIBLE WHILE REMAINING WITHIN THE TAPER.



APPROVED:  
*Frank Murphy*  
 DEPUTY DIRECTOR - OPERATIONS  
*Khalil Zane*  
 DIRECTOR, DEPARTMENT OF TRANSPORTATION

**CITY OF BALTIMORE**  
**DEPARTMENT OF TRANSPORTATION**  
**TRAFFIC DIVISION**

**PARTIAL ROADWAY CLOSURE /**  
**MULTILANE UNDIVIDED**  
**EQUAL / LESS THAN 40 MPH**

ISSUED	REVISED	REVISED	
8 / 2010			
<b>STANDARD NO.</b> BC 104.03-8			
SCALE : NONE		SHEET 1 OF 1	