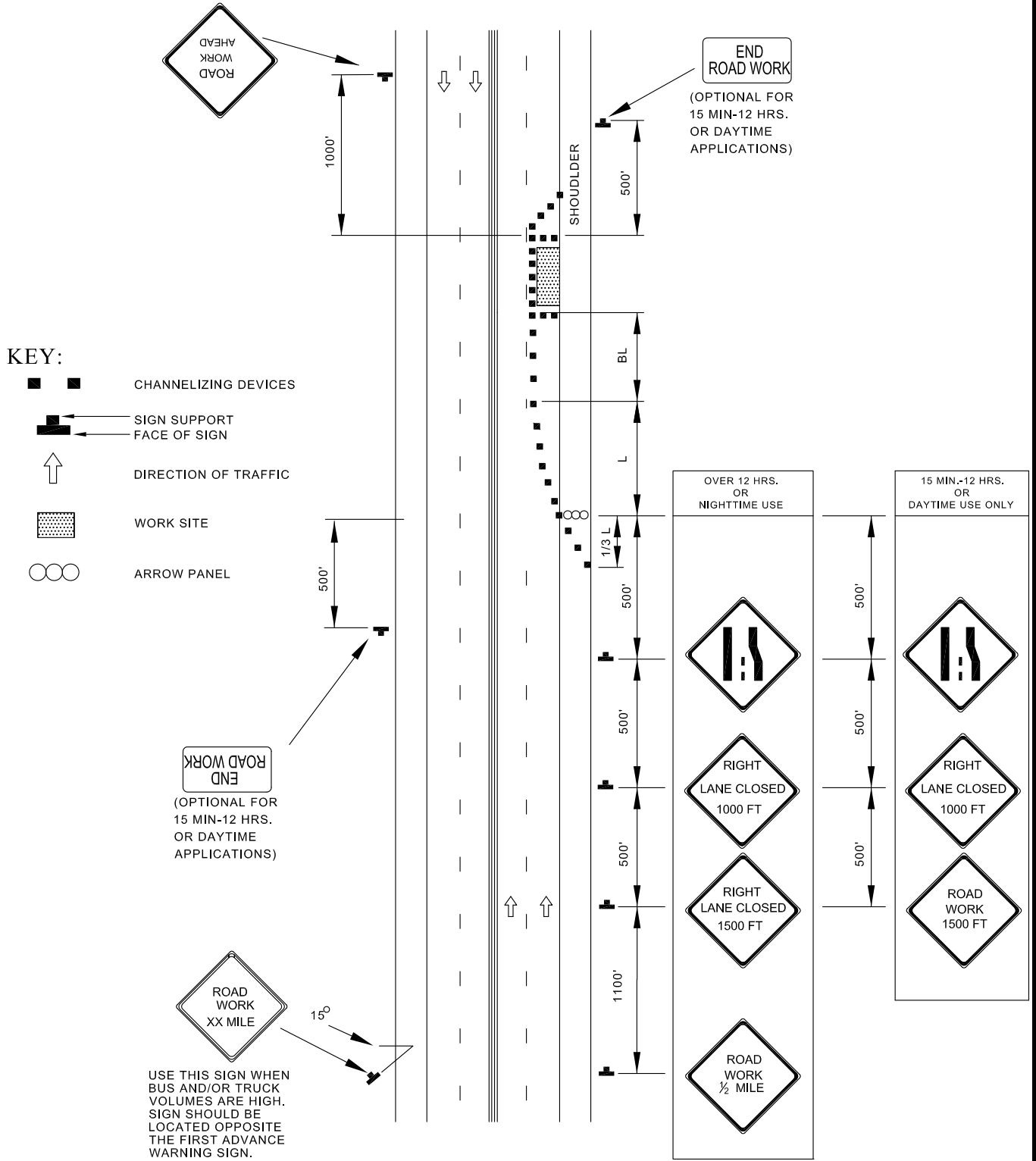


TEMPORARY TRAFFIC CONTROL TYPICAL APPLICATION



USE THIS SIGN WHEN BUS AND/OR TRUCK VOLUMES ARE HIGH. SIGN SHOULD BE LOCATED OPPOSITE THE FIRST ADVANCE WARNING SIGN.



APPROVED:
Frank Murphy
 DEPUTY DIRECTOR - OPERATIONS
Khalil Zane
 DIRECTOR, DEPARTMENT OF TRANSPORTATION

CITY OF BALTIMORE
 DEPARTMENT OF TRANSPORTATION
 TRAFFIC DIVISION

**RIGHT LANE CLOSURE / MULTILANE
 UNDIVIDED
 EQUAL / LESS THAN 40 MPH**

ISSUED	REVISED	REVISED
8 / 2010		
STANDARD NO. BC 104.03-6		
SCALE : NONE	SHEET 1 OF 1	