



Madison Avenue Bicycle Boulevard
March 21, 2022

Madison Avenue Bicycle Boulevard

Agenda

- Bike Baltimore Vision & Goals
- Bicycling in Madison Park
- Design Elements
- Draft Concept
- Feedback & Questions



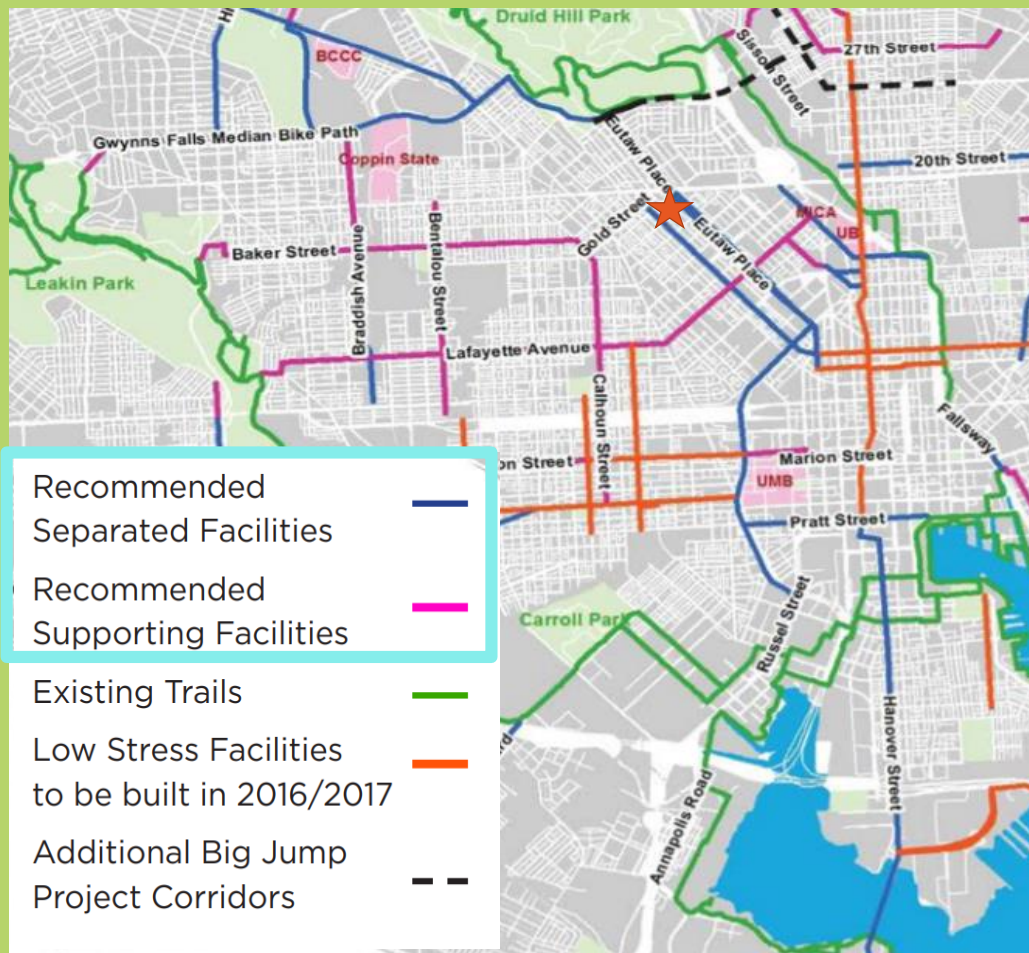
Eutaw-Washburn Elementary School Mural

Bike Baltimore

Vision & Goals

Bike Baltimore Vision & Goals

- Baltimore City Bike Master Plan (2015)
- Separated Bike Lane Network (2017)
- Complete Streets (2018 & 2021)
- Rapid Enhancement Plans (2022)
 - Madison Avenue Bicycle Boulevard



Bicycling in Madison Park

Types of Bike Facilities



Separated Bike Lane



Bicycle Boulevard

MADISON AVENUE BICYCLE BOULEVARD & EUTAW PLACE SEPARATED BIKE LANE



☆ Area Destinations

□ Bike Lane Connection

— Madison Avenue

★ You are here

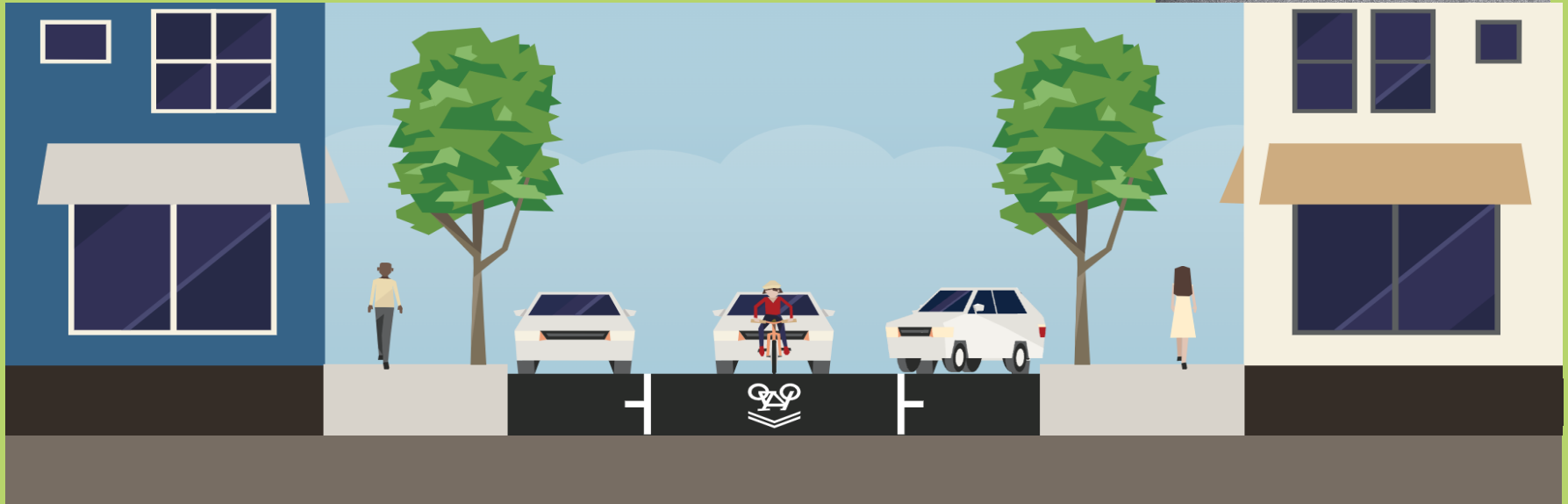


DESIGN ELEMENTS

Common Design Elements

Define Roadway through new striping

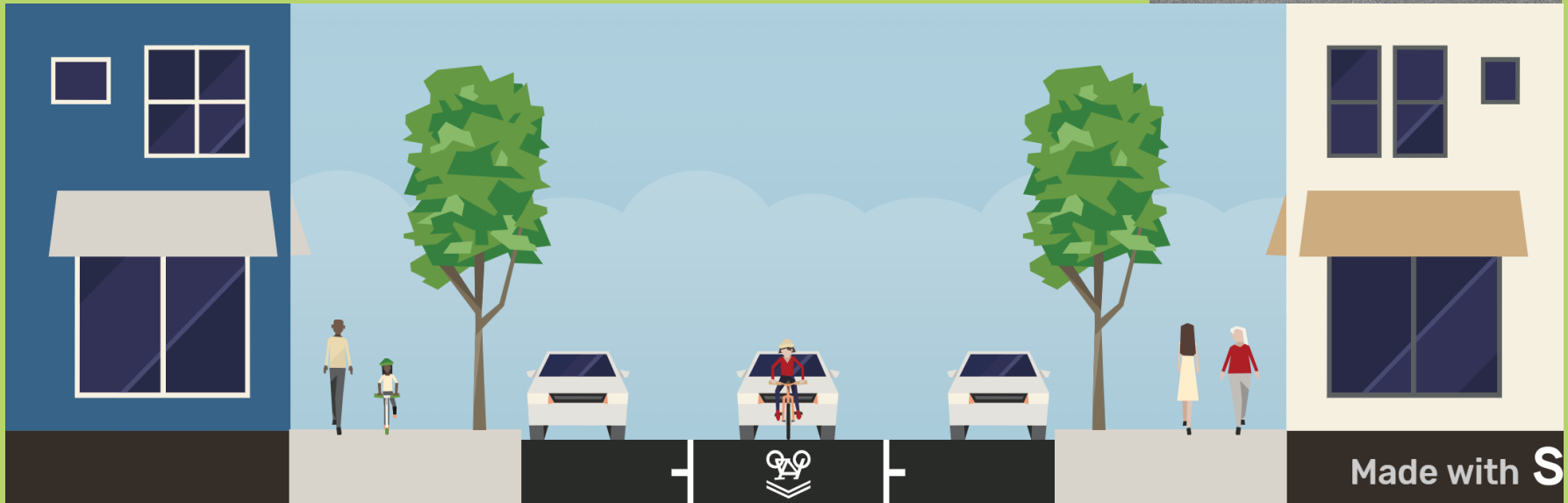
- 11 feet or less driving lane
- 8-10 feet parking spaces
- Back-in Parking



Common Design Elements

Define Roadway through new striping

- 11 feet or less driving lane
- 8-10 feet parking spaces





Madison Avenue & Bloom Street

Diagonal Diverter



PAINT CROSSWALKS
&
NEW SIGNAGE

DRAFT CONCEPT

Madison Avenue Overview

North Avenue through Wilson Street



↑
Bloom Street

↑
Presstman Street

↑
Roberts Street

↑
Laurens Street

North Avenue to Presstman Street



Crosswalk Striping



Parking Space Striping



Yellow Striping & Stop Sign Bars



Bicycle-friendly speed humps

Presstman Street to Laurens Street



Crosswalk Striping



Parking Space Striping

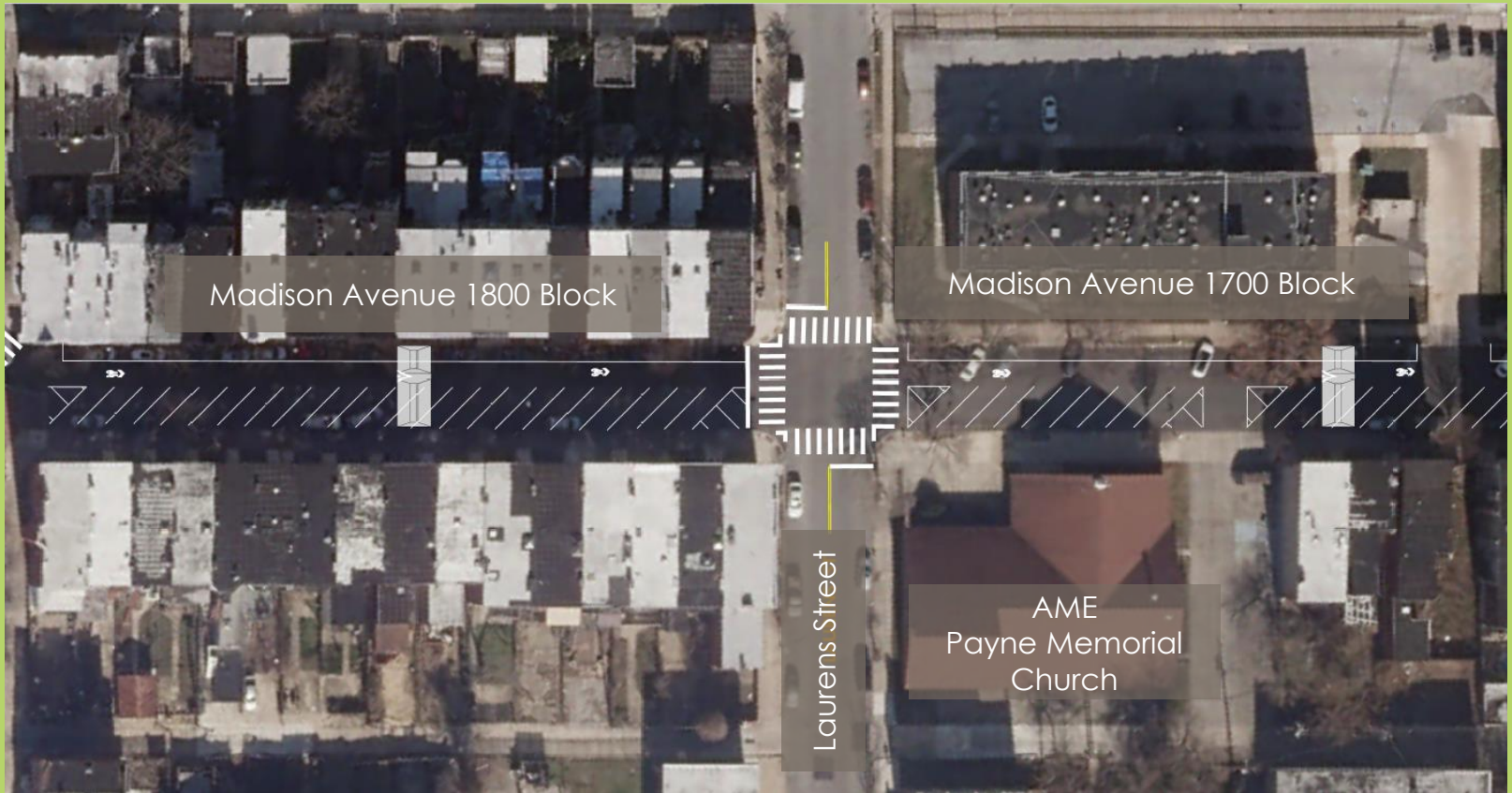


Yellow Striping & Stop Sign Bars



Bicycle-friendly speed humps

Laurens Street to Wilson Street



Crosswalk Striping



Parking Space Striping



Bicycle-friendly speed humps

Questions?

Contact Information:

Patrick M. Patterson

Bike Planner – Department of Transportation

Patrick.Patterson@baltimorecity.gov

443-984-4281